


MANAFORM



Your specialist for trading
h i g h - q u a l i t y
f o r m w o r k p r o d u c t s

MANAFORM



C

ONTENTS

001.	We are MANAFORM	page 2
002.	MF-80 Accessories	page 3-5
003.	MF-80 MEGA	page 6
004.	Circular formwork	page 7
005.	Column formwork	page 8
006.	Single side walls	page 9
007.	Slab formwork	page 10
008.	Spring tower system	page 11
009.	Accessories	page 12-13
010.	Special formwork	page 14-15
011.	Used formwork	page 16-17
012.	Product development	page 18-19
013.	Services	page 20



MANAFORM specialises in the *trade and rental* of high-quality formwork products.

In addition, we have our innovative, formwork that we developed on our own as well as matching accessories manufactured and, on request, we support our customers in the organisation of materials through our large network of production facilities located around the world.

Another innovative business field of **MANAFORM** is the procurement of *used products* of well-known formwork producers, which we can offer our customers at favourable conditions.

Manuel Akhbari, managing owner of **MANAFORM**:
„For more than 20 years we have been contributing our formwork expertise to the most challenging projects worldwide.

*This benefits our customers significantly.
We will gladly make you an offer!“*

[pic.: Peri Trio refurbished]

MF-80 STEEL PANEL FORMWORK

The MF-80 steel formwork is a robust and versatile shuttering system for all types of concrete works.

This shuttering system belongs to the category of heavy duty modular panel systems, and is suitable to be used on every site where concrete walls, columns or beams need to be realized in a cost-effective way.



MF-80 STEEL PANEL FORMWORK

Application of the MF-80 system:

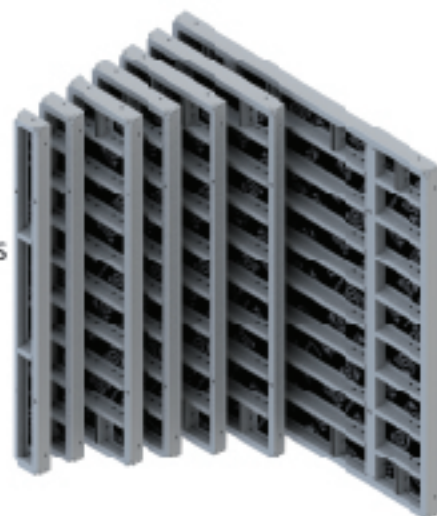
- Galvanized and powder coated steel frame
- 18mm plywood with a 220g/m² phenol coating
- Plywood screwed from behind
- Profiled sides

The MF-80 system meets the following requirements:

- Rigid and solid
- Easy and ergonomic
- Designed & calculated according to applicable standards
- In-house production, controlled and certified

Specifications of the MF-80 System:

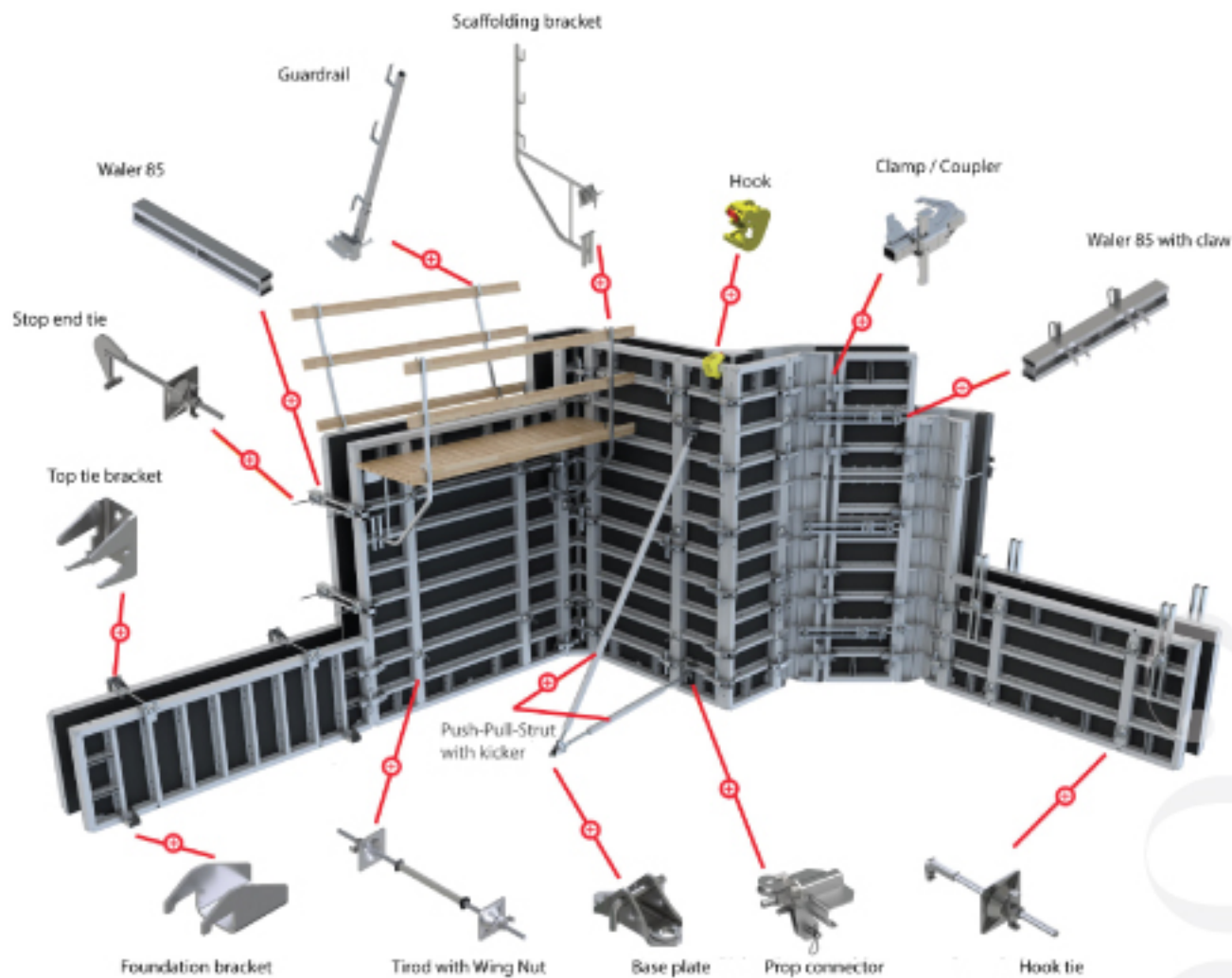
- Modular steel panel formwork
- Panel thickness 120 mm
- Panels with large surface
- Limited number of accessories
- High pressure resistance 80kN/m²
- Long life expectancy



Types:

- Wall panels:** 3 heights [330cm, 270cm und 120cm] in jeweils 13 Breiten [240cm, 120cm, 90cm, 72cm, 60cm, 55cm, 50cm, 45cm, 40cm, 30cm, 25cm, 24cm und 20cm]
- Universal panels:** 1 universal panel of 72cm width per height, equipped with an extra hole pattern every 3cm. To be used for corners, wall connections, columns and as stop-end panels
- Fixed corner panels:** internal corners, to make 90° angles
- Corner panels:** internal and external corners, to make sharp or blunt angles
- Shinking corners:** to make stair cores and lift shafts

MF-80 STEEL PANEL FORMWORK



MF-80 MEGA

The MF-80 Mega system is a modular panel formwork, specially designed for on-site concrete jobs where a fair-faced finish is required or where extremely high concrete pressures occur.

The panels are made of a high-quality painted steel frame and a top quality 5mm stainless steel sheeting. The sheet lies on top of the profiles so the joints between the panels are reduced to a very thin line.

Composition of the Mega panels:

- Painted steel frame with 3,5mm profiles
- 5mm stainless steel sheeting
- Sheets welded from behind

Specifications of the Mega system:

- Modular panel formwork
- Panel thickness 120mm
- Extremely strong and rigid
- Fully compatible with the MF-80 system
- Large size panels
- Limited number of parts
- High pressure resistance, minimum 100kN/m²
- Long life expectancy
- Stainless although magnetic sheets

Mega panel types:

- 3 heights: 330cm, 270cm und 120cm
- 7 widths: 240cm, 120cm, 90cm, 72cm, 60cm, 30cm und 24cm

Utilization of the Mega formwork:

Assembly, fitting and applications are similar to the Mega system .

The Mega panels are fully compatible with the Mega system.

MF-80 on one side and Mega on the other side or side by side is possible.

CIRCULAR FORMWORK CONFLEX

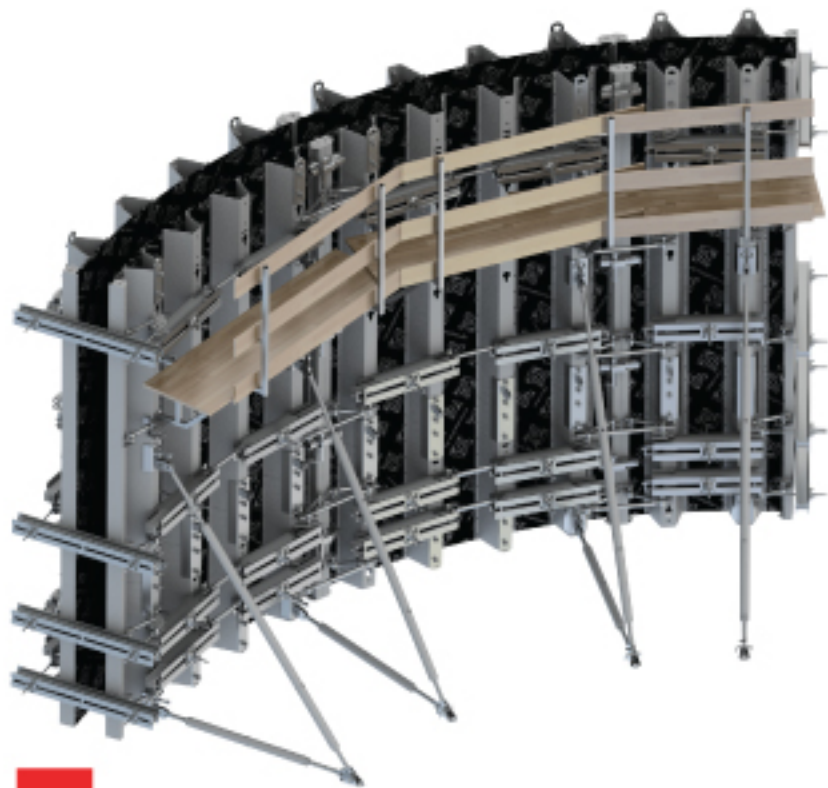
Any circular wall with a minimum radius of 3m can be cast by using this adjustable and quick to fit circular shuttering system. This adjustable shuttering system is suitable to be used on every site where circular concrete walls need to be poured. Adjusting the radii is easy and simple which makes Conflex a cost-effective system. Through total quality management, in design, production and logistics, we guarantee a permanent high quality.

Composition of the Conflex panels:

- Galvanized steel side profiles
- 18mm plywood with a 220g/m² phenol coating
- Plywood screwed from behind

Specifications of the Conflex Systems:

- 3 panel heights (330cm, 270cm und 120cm) each with 2 widths for the inside panels (240cm und 126cm) as well as for the outside panels (250cm und 130cm).
- Panel heights are identical to the panel heights of the MF-80 wall formwork, so nicely aligned joints will appear on the concrete surface when using Conflex and MF-80.
- The radii can be adjusted by using the spindles on the panels
- Accessories such as props, stop-ends and corbels can be fitted to the outside steel profiles



QUADRI COLUMN FORMWORK

The Quadri column formwork is a multifunctional hit-and-miss system for rectangular columns

Composition of the Quadri panels:

- Galvanized and/or painted frame
- 18mm plywood with a 220g/m² phenol coating, or stainless steel sheeting

Requirements of the Quadri system:

- Rigid, solid, easy and ergonomic
- Designed and calculated according to applicable standards
- Plywood screwed from behind

Handy:

- With the same set, column boxes can be prepared with sections from 150mm x 150mm up to 850mm x 850mm
- Adjustable with 50mm increments
- The heights are similar to those of the standard Tricon panels: 1200mm, 2700mm and 3300mm
- Different column boxes can be assembled on top of each other

Fast:

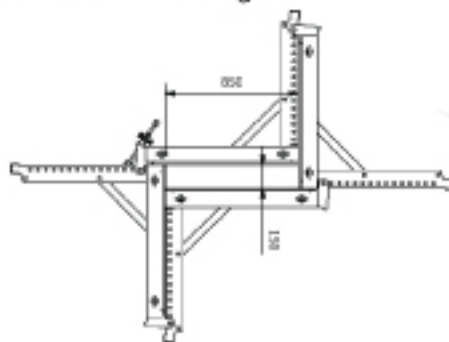
- All accessories are integrated in the formwork
- A set of 4 panels can be moved on-site in one single crane lift
- Stacked on a truck, a complete set takes very little space

Strong and sustainable:

- Pressure resistance of more than 80kN/m²
- Minimum deflection
- Long life expectancy

Made to measure possibilities:

- Larger sections
- Other heights
- Stainless steel sheeting



SINGLE SIDE WALLS

Brace frames are used for one-sided concreting. They transfer the concrete pressure from the wall via the anchors to the substructure.

There are four different brace frame types depending on the concreting height.

Type S is the standard brace frame

Types A,B and C are stackable and are used together depending on the height or can also be used independently.



SLAB FORMWORK

MANAFORM has a complete set of 2T props and accessories

The 4 different MF props have an overall range from 1,80m to 5,50m. They are solid, galvanized and completely in accordance to EN-1065. At their highest point, all 4 props have a 2T capacity.

In combination with the MANAFORM crossheads, tripods and H-20 girders, the MF props form a perfect slab prop system.

EN-1065	PGD30 - 20kN	PGD35 - 20kN	PGD40 - 20kN	PGD55 - 20kN
	1,82 m - 3,00m	2,05 m - 3,50 m	2,21 m - 4,00 m	3,05 m - 5,50 m
	15,3 kg	16,9 kg	22,4 kg	34,2 kg
H (m)	F _{max} (kg)	F _{max} (kg)	F _{max} (kg)	F _{max} (kg)
1,8	3840			
1,9	3840			
2,0	3500	2770		
2,1	3250	2770		
2,2	3090	2770		
2,3	2930	2770	3090	
2,4	2800	2770	3090	
2,5	2720	2770	3090	
2,6	2640	2770	3090	
2,7	2540	2770	3090	
2,8	2380	2770	3090	
2,9	2220	2770	3090	
3,0	2060	2770	3090	
3,1		2770	3090	3840
3,2		2770	3090	3840
3,3		2770	3090	3840
3,4		2570	2910	3840
3,5		2420	2800	3840
3,6			2670	3840
3,7			2530	3840
3,8			2390	3840
3,9			2250	3840
4,0			2110	3840
4,1				3840
4,2				3820
4,3				3650
4,4				3490
4,5				3340
4,6				2180
4,7				3020
4,8				2860
4,9				2710
5,0				2600
5,1				2490
5,2				2380
5,3				2270
5,4				2160
5,5				2060

MF SHORING TOWER SYSTEM

MANAFORM has a shoring tower system applying frames and diagonal braces. The 2 types of MF frames with 4 different diagonal braces each, can cope with any height and surface area required. The admissible load depends on the configuration of frames and braces. In combination with the **MANAFORM** crossheads, spindles and H-20 girders, the MF frames and braces form a perfect shoring tower system.

H (mm)	1300				1500			
A (mm)	750	1250	1500	2000	750	1250	1500	2000

H (mm)	A (mm)
1100	750
	1250
	1500
	2000
1500	750
	1250
	1500
	2000

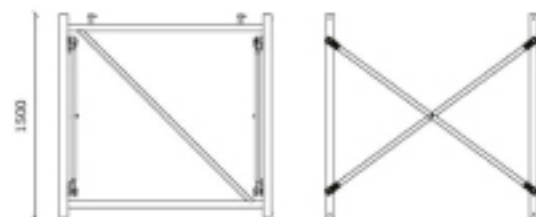
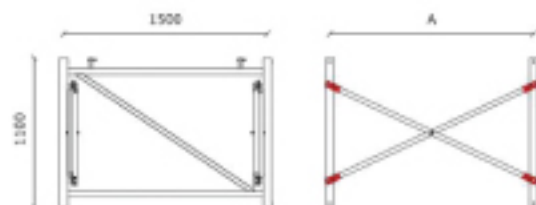
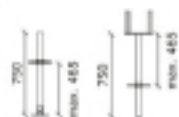
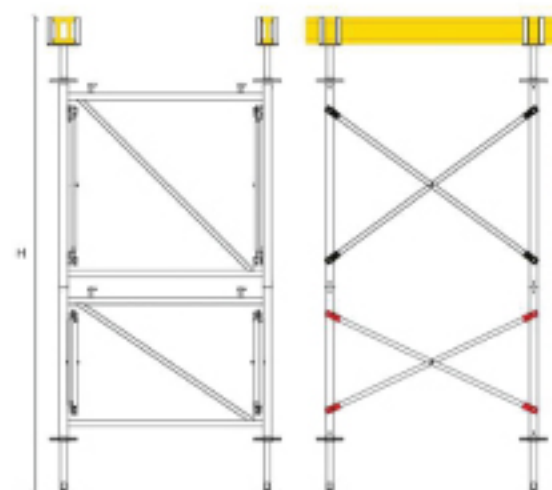
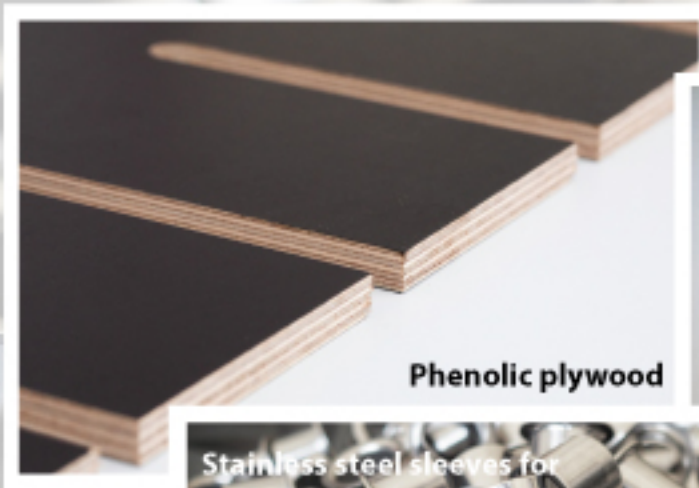


Diagram	H (mm)	
	Min.	Max.
	1180	2120
	1580	2620
	1180 x2	3620
	1580 + 1200	3220
	1580 x2	3620
	1180 x3	4120
	1580 + 1200 x2	4320
	1580 x2 + 1100	4720
	1580 x3	5120
	1580 + 1200 x3	5420
	1580 x2 + 1100 x2	5820
	1580 x3 + 1100	6220
	1580 x4	6620
	1580 x2 + 1100 x3	6920
	1580 x3 + 1100 x2	7320
	1580 x4 + 1100	7720
	1580 x5	8120
	1580 x3 + 1100 x3	8420
	1580 x4 + 1100 x2	8820
	1580 x5 + 1100	9220
	1580 x6	9620



ACCESSORIES



Phenolic plywood



Parts for repair phenolic plywood



Stainless steel sleeves for anchor holes in plywood



PVC plugs 20/24



Crosshead galv.

ACCESSORIES

Wing Nut square (forged material)



Wing Nut round (forged material)



Universal tripod galv.



Steel props



SPECIAL FORMWORK

Self-supporting form for arch bridges

Details largest bridge:

Width on top 10m | width at the base 20,8m · Span 20,3m | arch length 25,6m



Bridge pier formwork

This large infrastructure job included:

- 4 bridges
- 13 viaducts
- 5 tunnel

Specifications of the piers:

- length up to 21,5m
- Width tapered 134cm to 75cm
- height 6,425m



OTO

SPECIAL FORMWORK

Hydraulic climbing circular wall formwork

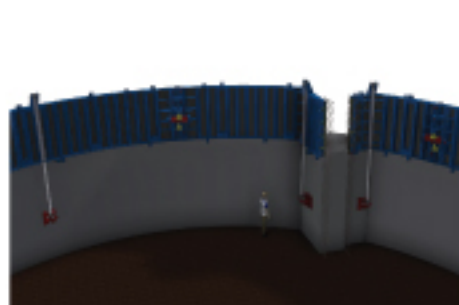
Details:

Inner diameter 20m, wall thickness 800mm, height 26,5m

Full circumference inside and outside formwork, poured in one go, height 2m

Partition wall between dry and wet part of the tank is poured afterwards

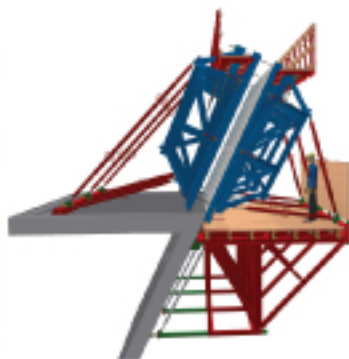
A 1m starter is cast on both ends of the partition wall in phase 1



Adjustable formwork and climbing system for twisted walls

The new County Hall in Antwerp is a building with 8 completely twisted levels.

The outside walls of these floors lean back- or forwards. All concrete used is white and the inside of the building needs to be fair-faced. For this purpose, we designed and manufactured a full steel adjustable and twistable formwork without tie-bars through the wall and of which the inside panels have a stainless-steel facing, in order to avoid rust stains.



USED FORMWORK

Purchase and sale or system exchange of system formwork from all manufacturers. Do not hesitate to contact us if you wish to sell or for the procurement of used material of all common systems, components and construction equipment.

Peri Trio

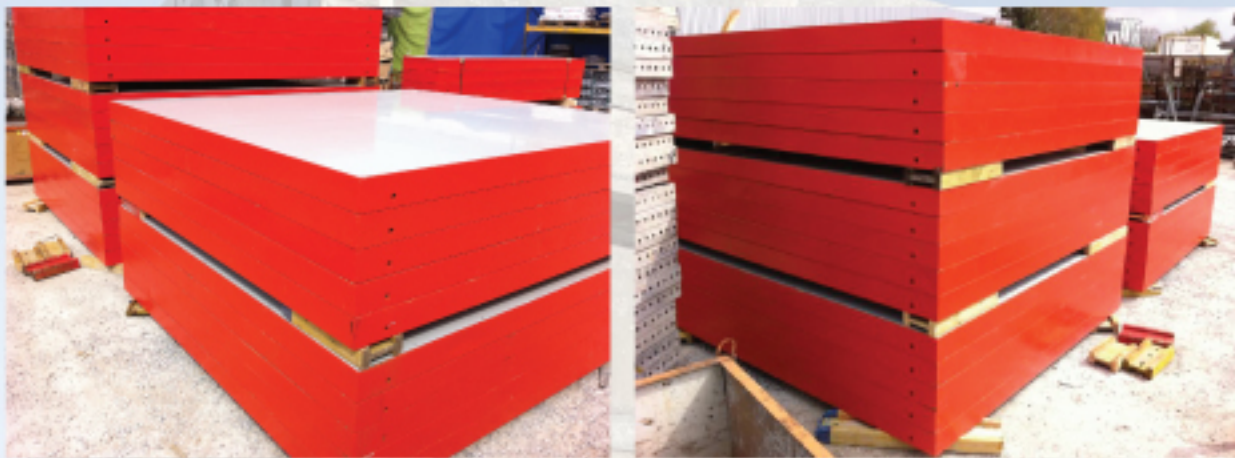


DOKA Eurex 20 top steel props



USED FORMWORK

Meva Mamut with Alkus Plywood | new refurbished



DOKA Framax · DOKA Framax RU Clamp



PRODUCT DEVELOPMENT

MANAFORM is your specialist in procuring custom-made solutions for formwork construction projects. Our network of producers has grown steadily over many years and has been tried and tested worldwide. Our cooperation partners all over the world produce everything from high-quality aluminium and steel that is needed in the formwork sector in accordance with the usual applicable quality standards. This includes frame elements in various sizes as well as accessories such as assembly locks, bolts or various push-pull props. Of course, our production facilities are equipped with laser technology for the extremely precise processing of the products.

After all, **MANAFORM** stands for quality – see for yourself!



PRODUCT DEVELOPMENT



OUR SERVICES

LEASING | HIRE PURCHASE

Leasing allows for manageable instalments to protect equity and credit lines.

Freely selectable terms between 24 and 60 months.
We offer you constant instalments at favourable secured interest rates over the entire term.
You can choose between leasing and hire purchase.
Please contact us for an individual offer.

TRANSPORT | LOGISTICS

Our logistics experts have the right solution for the transportation of your order:
From the delivery of the material at the agreed time to a simple call-off order for the formwork quantities.



MANAFORM

The logo for Construx, featuring a stylized blue and white circular graphic to the left of the word "construx" in a lowercase, sans-serif font.



MANAFORM GmbH has been the official trading partner of Construx bvba since January 1st, 2020.

We provide consulting services for all frame and system formwork projects in Germany.

Your contact person Manuel Akhbari is looking forward to your request.: akhbari@manaform.de

MANAFORM

Headquarters:

Manaform GmbH
Siegerlandstr. 35 · D-45770 Marl

Warehouse:

Manaform GmbH
Dieselstr. 21a · D-44805 Bochum

Phone: +49 [0]2365 20 22 678

Mobile: +49 [0] 170 66 88 88 1

Fax: +49 [0] 2365 20 22 679

info@manaform.de

<https://manaform.de>

